

Nippon Pneumatic Mfg. Co., Ltd.
Sales & Marketing

2-5-39 Hishie, Higashi-Osaka,
Osaka, 578-0984, Japan
TEL : +(81)72-963-1585
FAX : +(81)6-6974-5523
web site : http://www.npk.jp/english/index_e.html

Contact in your area

NPK

NPK Attachments



HYDRAULIC HAMMERS ALSO AVAILABLE !

NPK manufactures an extensive selection of Hydraulic Hammers covering from Light to Medium-Heavy Duty classes.

PH-series
Digital catalogue ▶



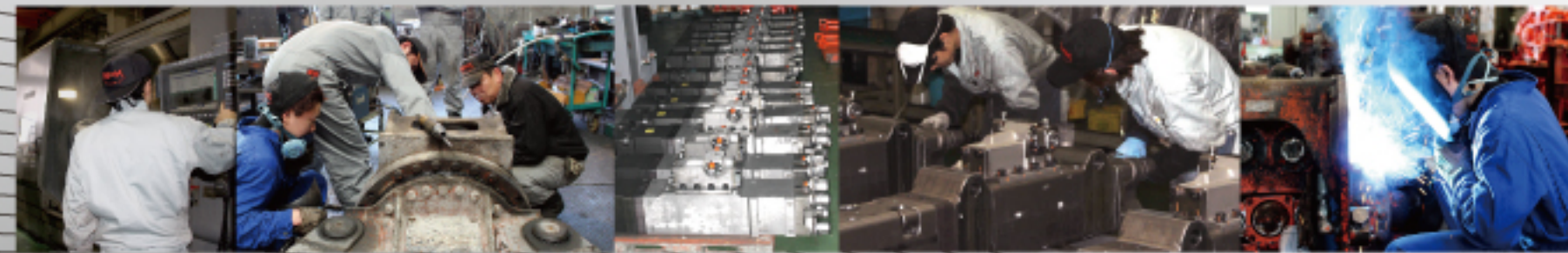
Significant innovations in the growing mini and compact equipment market



GH-series
Digital catalogue ▶



The most powerful & reliable line up



All NPK products are serviced and supported by NPK and its extensive Dealer network



- Crusher
- Steel Shear
- Grapple
- Compactor
- Rotary Screen
- Auto Recycler
- Retrofitter
- Pneumatic Hammer

NPK

2019.12 v1



cover photo : SV-100XR

Hydraulic hammers available :
PH-Series for Light & Medium, GH-Series for Medium & Heavy Duty Applications



● **Auto Recycling**
Auto Recycler

● **Construction**
Rotary Screens
Compactors

● **Demolishing**
Primary Crushers
Secondary Crushers
SRC Crushers
Steel Shears

● **Recycling**
Grapples
Steel Shears

● **Indoor**
Vib Scrapers
Pinch Cutters

Demolition P5~P8



**Primary
Crushers**
P5



**Secondary
Crushers**
P6



**SRC
Crushers**
P7



**Steel
Shears**
P8

Screening · Grappling P9~P10
Recycling · Pinching/Cutting · Scaling



Compactors
P9



Grapples
P9



**Auto
Recycler**
P10



**Rotary
Screens**
P9



**Vib
Scrapers**
P10



**Pinch
Cutters**
P10

Pneumatic P10



**Pneumatic
Hammer**
P10

Technology to build a new future

**NPK offers a wide range of innovative products
Recognized world wide for quality and durability**

From its beginnings, NPK has been based on "monozukuri". Monozukuri is translatable as: "making, fabricating, crafting, the development of unique product lines that match customer needs and also serve society as a whole". Over the years NPK has designed, and produced products which serve the evolving needs of its customers. NPK products have gained a reputation for reliability and performance. NPK continues to develop new products to meet the needs of construction, demolition & mining industries. As we begin our second century, NPK continues to produce innovative designs to make; user-friendly, eco-friendly, and energy-saving products.

In our second century, NPK will make a further commitment to making user-friendly, eco-friendly, and energy-saving attachments.

NPK Advantages

Integrated Booster System

NPK offers “an exclusive integrated booster system” that automatically activates when the jaws meet resistance

(Primary and Secondary Crushers, Steel Shears)

FEATURE 1: ♦ High crushing power with low oil flow

FEATURE 2: ♦ Smaller cylinder diameter produces fast cycle times and more productivity

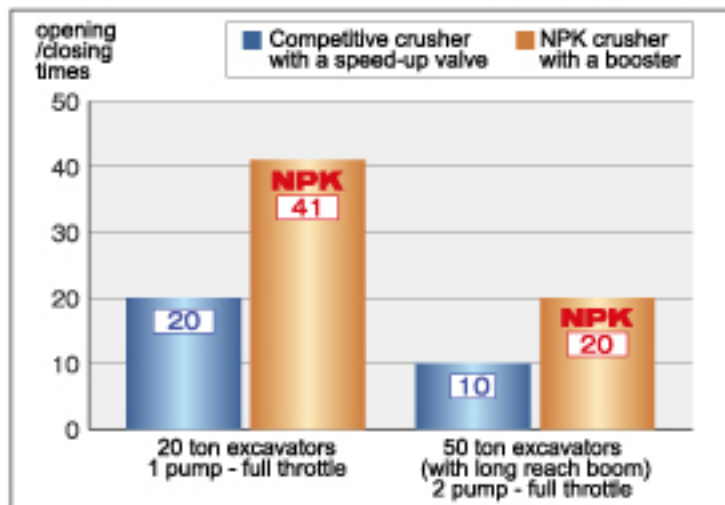
FEATURE 3: ♦ Cost reduction due to relatively low oil flow



The following is performance comparison of cycle times and fuel consumption between NPK crusher SV-24X and the same class crusher with a speed-up valve. Results based on 90 mins of continuous operation on 20 and 50 ton excavators equipped with long reach booms.

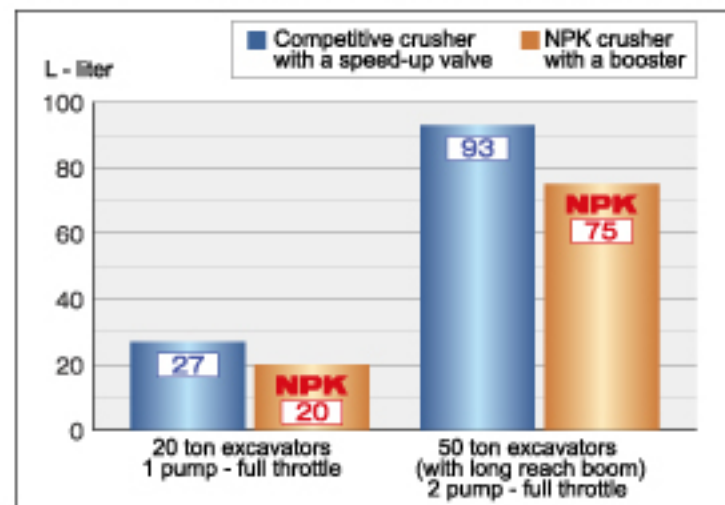
Short Cycle Time

[Graph 1 : Opening/ closing times per 1L of fuel]



Excellent Fuel Efficiency

[Graph 2: Fuel consumption of 90 mins operation]



* The comparison data is based on continuous operation of the arms to be fully-opened and closed with no load, and not on actual operation of crushing various materials.

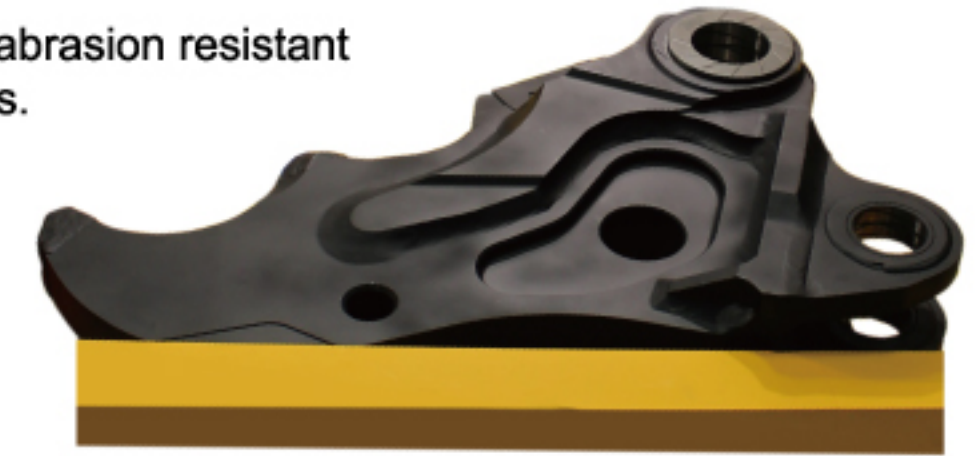
Abrasion Resistant Steel

NPK offers “most reliable & qualified Arms”

♦ The use of abrasion resistant steel plate markedly reduces the weight of arms exposed to severe abrasive conditions.

♦ Compared with regular steel, the steel plate reduces structural weight and delivers economic merits.

♦ Adoption of high performance abrasion resistant will prolong the service life of arms.



Designed & Manufactured in Japan



♦ NPK products are designed, manufactured and tested at our main facility located in Nabari, Japan. Staffed by devoted employees, and equipped with the latest technology, the Nabari plant operates continuously around the clock.

♦ NPK and its employees take pride in their Made-in-Japan-Quality. A serious commitment to product support enables NPK to maintain a high level of customer satisfaction. The “NPK” trademark has become a symbol for quality products worldwide.

All NPK products are serviced and supported by NPK and its extensive Dealer network

Well suited for most any demolition application, crunching, pulverizing & cutting of steel.

- Equipped with integrated Booster system, which provides more power from less flow.
- Well balanced design for stability during operation.



NPK

Primary Crusher

- SV-Series** equipped with BOOSTER
- Increased performance from improved stability.
 - Dual cylinder design provides greater crushing force.

2 cylinder type

	crushing force at tip	max/min opening	preset pressure of built-in relief Valve	excavator's relief setting pressure	oil flow	mass	recommendable excavator's mass
	kN	mm	MPa	MPa	L/min	kg	ton
SV-7X(R)	470	700/0	-	28	50~130	745 (745)	6~9
SV-140(R)	700	970/0	28	28	80~230	1450(1450)	10~16
SV-18X	700	950/0	28	30	80~230	1790	19~21
SV250(R)	1150	1200/0	28	30	100~400	2450(2450)	19~28
SV380(R)	1400	1400/0	28	28	150~500	3800(3740)	29~38
SV400(R)	1500	1500/0	28	30	150~500	4100(4090)	29~38
SV500(R)	1780	1750/0	28	30	175~600	4960(4930)	39~48
SV-65XR	2140	2000/0	26	28	200~700	special order	60~70
SV-100XR	2660	2200/0	28	30	200~800	special order	80~100
SV-110XR	2600	2200/0	28	30	200~800	special order	180~220

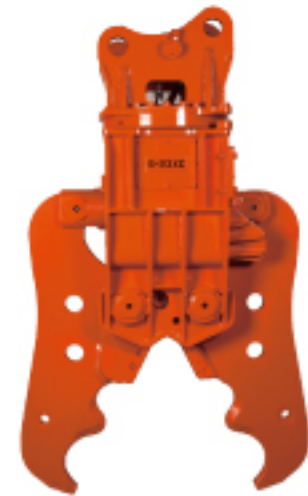


SV400

- S-Series** equipped with BOOSTER
- Extremely powerful and fast operations.

1 cylinder type

	crushing force at tip	max/min opening	preset pressure of built-in relief Valve	excavator's relief setting pressure	oil flow	mass	recommendable excavator's mass
	kN	mm	MPa	MPa	L/min	kg	ton
S-13XC	660	810/0	25	28	80~180	1395	10~16
S-16XC	710	850/0	25	28	80~180	1530	10~16
S-23XC(R)	890	1000/0	28	30	100~250	2275(2370)	19~21
S-24XC(R)	1000	1100/0	25	28	100~250	2465(2550)	19~21
S-36XC(R)	1400	1355/0	25	28	150~350	3770(3800)	29~38
S-42XC(R)	1520	1500/0	25	28	175~400	4560(4560)	39~48



S-23XC

- X-Series** equipped with BOOSTER
- Rebar is equipped as standard.

1 cylinder type

	crushing force at tip	max/min opening	preset pressure of built-in relief Valve	excavator's relief setting pressure	oil flow	mass	recommendable excavator's mass
	kN	mm	MPa	MPa	L/min	kg	ton
X-1	240	260/0	21	21	20~30	120	1.3~2.0
X-3A	320	350/0	21	23	30~60	290	2.5~4.0
X-4A	340	440/0	21	23	30~70	370	4.0~5.5
X-7A	490	550/0	25	28	50~130	660	6.0~9.0



X-4A

Secondary Crushers (Pulverizers)

- G-Series** equipped with BOOSTER
- Faster secondary demolition and concrete recycling.
 - Light weight and quick action.
 - Equipped with rebar cutter as a standard.
 - Wide jaw opening.

	crushing force at tip	max/min opening	preset pressure of built-in relief Valve	excavator's relief setting pressure	oil flow	mass	recommendable excavator's mass
	kN	mm	MPa	MPa	L/min	kg	ton
G70	410	600/0	26	28	50~130	690	6~9
G120	690	775/0	28	30	80~180	1165	10~16
G175	696	822/0	26	28	100~250	1740	19~21
G200	815	860/0	26	28	100~250	2010	19~21
G-28J	1160	1000/0	28	30	150~350	2980	25~38
G-40	1240	1130/0	30	32	175~400	3815	39~48



G200

Secondary Crushers (Pulverizers) with MAGNET

- Permanent Magnet Type** equipped with BOOSTER
- No external power supply or generator is required.
 - Magnet on/off is achieved by the opening and closing of the jaws.

	crushing force at tip	max/min opening	preset pressure of built-in relief Valve	excavator's relief setting pressure	oil flow	mass	magnet size (long side x short side)	recommendable excavator's mass
	kN	mm	MPa	MPa	L/min	kg	mm	ton
G-20MC	655	840/0	26	28	100~200	2130	458 x 310	19~21



New

G-20MC

permanent magnet

- Electro Magnet Type** equipped with BOOSTER
- The lifting power of the electro-magnet is 1.5 times more powerful than the permanent magnet.

24 Volt

- No generator required (electric power supplied from excavator's battery)

	crushing force at tip	max/min opening	preset pressure of built-in relief Valve	excavator's relief setting pressure	oil flow	mass	magnet size (diameter)	recommendable excavator's mass
	kN	mm	MPa	MPa	L/min	kg	mm	ton
G-15JEL	690	775/0	28	30	80~180	1480	600	12~16
G-20JEL	670	800/0	26	28	100~250	1990	600	19~21
G-30JEL	1160	1000/0	28	30	150~350	3435	700	29~38



G-20JEL

electric magnet

220 Volt

- External generator required

	crushing force at tip	max/min opening	preset pressure of built-in relief Valve	excavator's relief setting pressure	oil flow	mass	magnet size (diameter)	recommendable excavator's mass
	kN	mm	MPa	MPa	L/min	kg	mm	ton
G250EH	656	840/0	26	28	100~250	2460	760	19~21



New

G250EH

Powerful 220V!



*Specifications are subject to change without notice.

Built for a wide range of applications

Extensive range of attachments for construction, demolition and steel processing operations.

- Equipped with Integrated Booster System.
- Safe and quick movement.

NPK



SRC Crusher

2 in 1 Demolition Equipment - CRUSHING & CUTTING

- Suitable for demolition of Steel Reinforced Concrete (SRC).
- Concrete fracture and cutting steel/rebar.
- Enhances operation efficiency.

	preset pressure of built-in relief Valve	max. excavator's relief setting pressure	crushing force at tip	crushing force at center	cutting length	max opening	mass	recommendable excavator's mass
	MPa	MPa	kN	kN	mm	mm	kg	ton
SRC15 (R)	-	32	680	1865	380	930	1520 (1530)	12~16
SRC25 (R)	-	32	960	2550	500	1025	2595 (2595)	19~28
SRC38 (R)	-	32	1250	3470	560	1300	3805 (3765)	29~38
SRC48 (R)	-	32	1400	3620	600	1430	4810 (4850)	39~48



SRC15

Steel Shear

K-Series

equipped with BOOSTER

- Designed specifically for metal cutting applications; demolition, sizing & recycling.
- Equipped with Integrated Booster System, providing maximum crushing force and quicker cycle times.

1 cylinder type

	cutting force	max opening	cutting length	preset pressure of built-in relief Valve	excavator's relief setting pressure	oil flow	mass	recommendable excavator's mass
	kN	mm	mm	MPa	MPa	L/min	kg	ton
K-3J	730	340	220	18	21	30~60	300	2.5~4.0
K-4J	800	400	260	18	21	30~70	370	4.0~5.5
K-7J	1290	530	340	21	25	50~130	695	6~9
K-13J(R)	2500	530	440	25	28	80~180	1400(1640)	10~16
K-23J(R)	2700	585	500	26	28	100~250	2435(2510)	19~21



K-23J

2 cylinder type

	cutting force	max opening	cutting length	preset pressure of built-in relief Valve	excavator's relief setting pressure	oil flow	mass	recommendable excavator's mass
	kN	mm	mm	MPa	MPa	L/min	kg	ton
K-24X(R)	2600	780	460	28	30	100~250	2400(2505)	19~21
K-33X(R)	3200	825	530	28	30	150~350	3350(3380)	29~38
K-42X(R)	3900	920	560	28	30	175~400	4080(4130)	39~48



K-42X

NO-BOOSTER

- Innovative arm with Arc Cutting Blades

	cutting force	max opening	cutting length (frame / arm)	preset pressure of built-in relief Valve	excavator's relief setting pressure	mass	recommendable excavator's mass
	kN	mm	mm	MPa	MPa	kg	ton
K240(R)	2900	700	500/550	-	32	300	2.5~4.0



K240

Multiprocessor

M-Series

equipped with BOOSTER

- Jaw profile engineered to guide material into cutting blades.
- 360° continuous power rotation.
- Slim-line design to increase visibility on the job.

	tip output	max opening	preset pressure of built-in relief Valve	excavator's relief setting pressure	oil flow	mass	recommendable excavator's mass
	kN	mm	MPa	MPa	L/min	kg	ton
M-20K	810	535	25	28	100~250	2090	19~21
M-31K	1100	580	26	28	150~350	3100	29~38
M-38K	1510	765	25	28	175~400	4335	39~48



M-20K



NPK job site movies openly available on web. Check it out !

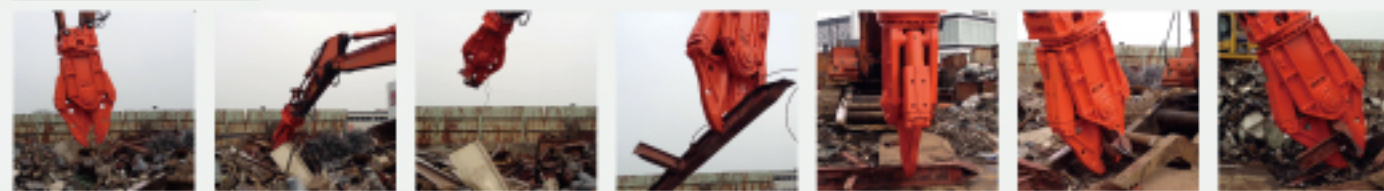
NPK JOB SITE MOVIE

Primary/Secondary Crusher



http://www.npk.co.jp/movie/me_cra.html

Steel Shear



http://www.npk.co.jp/movie/me_cut.html

Others



http://www.npk.co.jp/movie/me_other.html

*Specifications are subject to change without notice.

Built for a wide range of applications

Diverse range of products designed for a variety of construction and demolition applications.

- Pile driving - Grapples - Soil Compactors - Screening Buckets
- Auto Recycling - Indoor cutters & Surface scalers
- High Temperature Pneumatic Hammers

NPK



Grapples

- Ease of operation: 360° rotation.
- Durable : wear resistant teeth.

	preset pressure of built-in relief Valve	max.excavator's relief setting pressure	max opening	fork width	oil flow	mass	recommendable excavator's mass
	MPa	MPa	mm	MPa	L/min	kg	ton
SG-20	-	25	1020	325/172	~30	200	2.7~3.5
SG70	-	28	1600	440/250	~80	575	6~9
SG120	-	30	1800	550/315	~100	1020	10~16
SG200	-	30	2200	674/384	~150	1625	19~21



SG120

Auto Recycler

- Jaws designed to easily pierce through and cut sheet metal.
- 360° rotation for directing and positioning cutting.

	preset pressure of built-in relief Valve	excavator's relief setting pressure	crushing force at tip	max opening	oil flow	mass	recommendable excavator's mass
	MPa	MPa	KN	mm	L/min	kg	ton
AR-20X	28	30	215	734	~200	2000	19~21



AR-20X

Retrofitters (Indoor Cutters & Surface Scalers)

- Pinch Cutters - 360° rotation system for easy positioning
- Capable of cutting thin sheet material up to 30 mm angle bar
- Symmetrical movement of jaws, provides smooth operation.

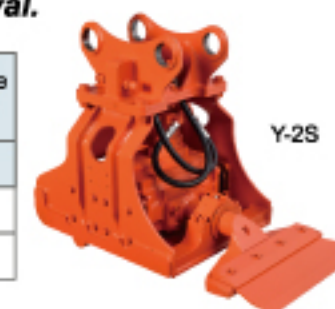
	preset pressure of built-in relief Valve	max.excavator's relief setting pressure	crushing force at tip	max/min opening	mass	recommendable excavator's mass
	MPa	MPa	KN	mm	kg	ton
Z-1	-	21	56	304/0	110	1.3~1.8
Z-2	-	21	70	355/0	200	2.0~2.7
Z-3	-	27	120	420/0	280	3.0~3.5



Z-3

- Vibration Scrapers - Scraper housing designed with dual bearings for smooth stable operation.
- High vibration forces are directed at the scraper for quick material removal.

	preset pressure of built-in relief Valve	max.excavator's relief setting pressure	oil flow	vibration frequency	vibratory force	mass	overall height	recommendable excavator's mass
	MPa	MPa	L/min	Hz	kN	kg	mm	ton
Y-2S	-	14	30	33	5	135	535	1.3~1.8
Y-2L	-	14	40	33	5	140	547	2.0~3.0



Y-2S

Pneumatic Hammers

- Ability to operate in extreme high temperature applications
- Eco-friendly: no risk of oil contamination.

	air pressure	air consumption	blow per minute	length (without chisel)	mass	compressor	recommendable excavator's mass
	MPa	m ³ /mm	b.p.m.	mm	kg	kg	ton
NPH-3500	0.6	5.0	530	1200	260	50PS class	6~9
NPH-4500L	0.6	7.2	500	1390	485	75PS class	10~16



NPH-4500L

Compactors

- Dynamic vibratory impulse forces to achieve desired soil density.
- Reduce excessive settling from inadequate compaction.

	max.excavator's relief setting pressure	working pressure	oil flow	vibratory force	max number of vibration	mass	base plate size	recommendable excavator's mass
	MPa	MPa	L/min	kN	Hz	kg	mm	ton
C-2D	17	14	49	16	40	175	528 x 320	2~4
HC-4	17	12	125	78	40	850	700 x 1000	9~15
HC-7	17	12	200	104	40	950	900 x 1400	17~21



HC-7

Rotary Screens

- Rigid Reinforced frame & bucket teeth for excavating. - Side cutter option available.
- Adjustable speed of rotation for screening different materials
- Bi directional rotation for sifting or discharging

	preset pressure of built-in relief Valve	excavator's relief setting pressure	oil flow	cycle/min. of screen	screen capacity	screen size (standard)	mass	recommendable excavator's mass
	MPa	MPa	L/min	r.p.m.	m ³	mm	kg	ton
RS-12	14	16~25	90	~40	0.5	30	1100	10~16
RS200	16	18~25	120	~40	0.92	40	1885	17~21
RS-30	14	16~25	90	~20	1.6	150	2950	29~38



RS200

*Specifications are subject to change without notice.

Built for a wide range of applications